

Improving Surgical Outcomes by Enhancing Tissue Visualization



About EndoGlow

EndoGlow designs and manufactures fluorescent medical devices used to enhance visualization during minimally invasive surgeries.

The need for more visual information to improve real time decision making inspired the creation of EndoGlow's fluorescence based technology, Tissue Reveal Technology™. EndoGlow's cutting-edge technology was created out of real world robotic surgical experience, designed by surgeons for surgeons.

EndoGlow's fluorescent medical devices trans-illuminate tissues in order to visualize subsurface pathology, surgical planes and relative tissue depth.



Developed by Surgeons
for Surgeons



Woman Owned
Business



Made in
the USA



GYNECOLOGY

Tissue Reveal Technology™ enabled products trans-illuminate tissue during rectal or vaginal surgeries. This is beneficial with identification of subsurface pathology such as endometriosis or identifying scar tissue during a bladder dissection.



UROLOGY

In urological surgeries such as radical prostatectomies or cystectomies, back lighting the vagina or rectum, enhances anatomic borders. The fluorescence promotes the sensation of relative tissue depth during robotic minimally invasive surgeries. Both aspects have been beneficial when educating surgical learners to operative techniques.



COLORECTAL

Rectal cancer can distort anatomy. By utilizing Tissue Reveal Technology™ to trans-illuminate tissue, surgeons can view the natural borders of the rectum, identify any intra-rectal pathology and illuminate gaps in an anastomosis.

Introducing Tissue Reveal Technology™

EndoGlow's proprietary technology adds fluorescence to surgical tools. With Tissue Reveal Technology™, surgeons utilize fluorescence to obtain information such as tissue depth, tissue quality and pathology beneath the surface.

Below, the GreenEgg™ fluorescent manipulator with Tissue Reveal Technology™ is used during a minimally invasive robotic surgery.

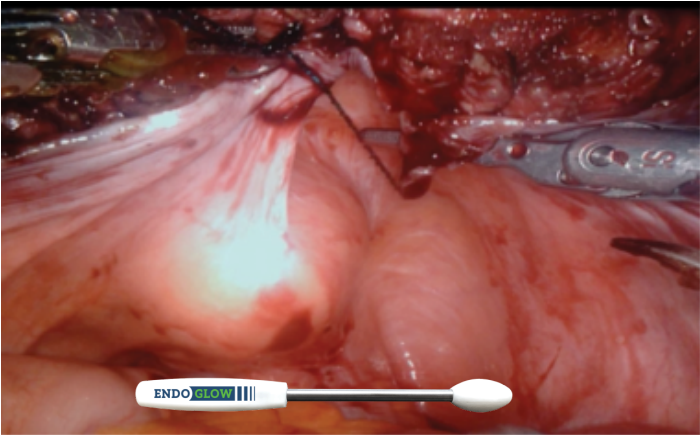


Figure 1: A view of the rectum with surgical system fluorescence mode disabled. The GreenEgg™ manipulator is in place in the rectum.

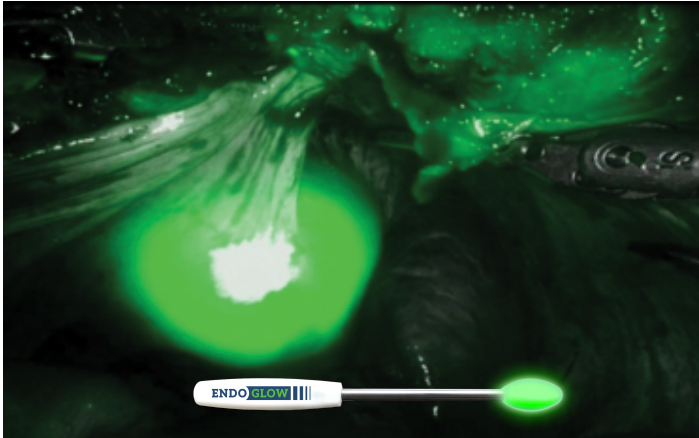


Figure 2: The same surgery with surgical system fluorescence mode enabled. The GreenEgg™ manipulator fluoresces in the rectum.

Batteries Not Required



Tissue Reveal Technology™ provides fluorescence without batteries or external power.

Iodine Free Fluorescence



Tissue Reveal Technology™ fluoresces without the use of iodine. EndoGlow devices can be used in iodine allergic patients.

Fluorescence Without Injections or Time Limits



Tissue Reveal Technology™ provides localized fluorescence without the need to mix or inject ICG.



Fluorescence is available throughout the surgery without time restrictions*.

"Anything that makes anatomy 'pop' really makes dissection easier and I 100% believe it is harder to injure something you actually see."

- Dr. Marc Eigg

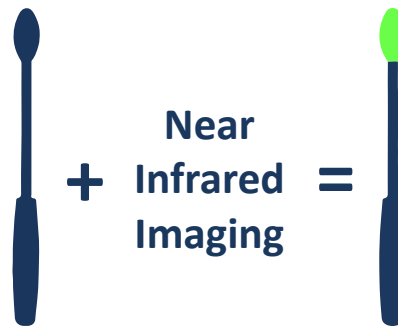
*Injected ICG is only effective within a short time window before it saturates the image

EndoGlow Tissue Reveal Products



The GreenEgg™ functions as a vaginal or rectal manipulator during pelvic surgeries.

Incorporating Tissue Reveal Technology™, the GreenEgg™ has the added benefit of providing fluorescence to trans-illuminate the tissue when imaged minimally invasive near infra red camera-based surgical systems.



The GreenEgg™ by EndoGlow. Incorporating Tissue Reveal Technology™, the GreenEgg™ fluoresces under near infrared imaging during minimally invasive surgery.



Incorporating Tissue Reveal Technology™, the GreenStent™ allows for trans-illumination of tissue during reconstructive pelvic surgeries. The ability to back-light tissue aids in bladder dissection, detection of subsurface vessels and more efficiently signals an incidental vaginotomy.



EndoGlow offers demonstrations and hands-on training for all of our

The EndoGlow Value Brief offers further information about the benefits of Tissue Reveal Technology.

To learn more, contact your EndoGlow representative.



125 Tech Park Dr.
Suite 2131
Rochester, NY 14623



+1 315-273-0005



support@endoglow.com



www.EndoGlow.com